



Vocal Music Virtual Learning

**8th Grade Choir**

**Accidentals: How They Work**

April 24, 2020



8th Grade Choir  
Lesson: 4/24/2020

**Objective/Learning Target:**

Demonstrate correct usage and identification of accidentals



## Warm Up Activity:

Draw a Sharp, Flat, and Natural and identify what they do.

When reading accidentals in music, there are 3 main considerations you must make:

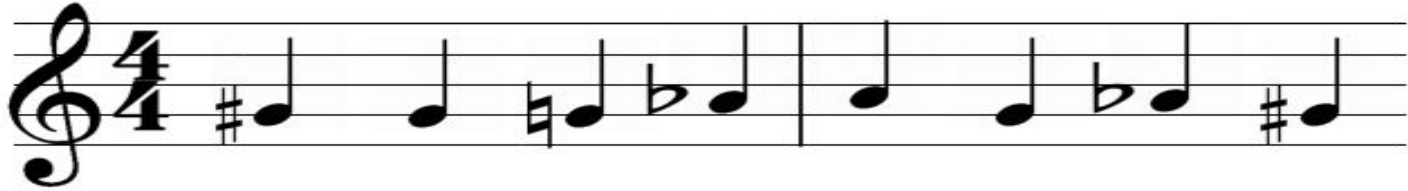
- 1). The key signature identifies which notes are automatically sharp/flat (we'll cover those later).
- 2). When an accidental appears next to a note, it applies to that note for the rest of the measure (unless a new accidental is used).
- 3). At the end of the measure, the note returns back to its original form (either the natural note or what's in the key signature).

Below are some examples of accidentals in action:



If you notice, sometimes a note is sharp without an accidental next to it. This is because of the G# in the key signature. We'll cover that more later.

Please identify the note with the correct accidental:



|



## Answers:

A musical staff in treble clef with a 4/4 time signature. The staff contains eight quarter notes: G# (first line), G (second line), G (second line), Ab (third space), A (third space), G (second line), Ab (third space), and G# (first line). The notes are grouped into two measures of four notes each by a vertical bar line.

\_G\_#   \_G\_#   \_G\_   \_A<sup>b</sup>   \_A\_   \_G\_   \_A<sup>b</sup>   \_G\_#

A musical staff in bass clef with a 4/4 time signature. The staff contains eight quarter notes: Bb (second space), Bb (second space), B (second space), C# (third line), C (third line), B (second space), C# (third line), and Bb (second space). The notes are grouped into two measures of four notes each by a vertical bar line.

\_B<sup>b</sup>   \_B<sup>b</sup>   \_B\_   \_C<sup>#</sup>   \_C\_   \_B\_   \_C<sup>#</sup>   \_B<sup>b</sup>



Please use the website below to do some extra practice. If you feel good about identifying notes on Treble and Bass Clef with ledger lines, turn on challenge mode and see how many you can get right in a minute!

### [Music Theory Practice](#)

Keep the same settings as the previous lesson and continue getting used to identifying notes with accidentals on and off the staff.





## Extra Practice:

Teoria is another good site for extra practice. It's pretty comprehensive, and offers in depth knowledge into many music theory topics. The reading music section is helpful for this topic, but there are many other topics to explore.

[Teoria Theory Practice](#)